

Flare Hem Dress



CIRCULO
www.circuloyarns.com

WHOOPEE FLARE HEM DRESS

Created by Luciana Panza

Sizes: 6(10, 14)

Finished Bust:

31.5(34.5, 38.5) inches / 80(87.5, 98) cm

Level: Advanced

MATERIALS:

5(6, 7) cakes of Whoopee color 9134

Crochet hook D-3/3.25mm, or size to obtain gauge

Tapestry needle

1 button (0.5"/1.25 cm)

Fabric to line dress

Paper, pencil, scissors and measuring tape.

STITCH GLOSSARY AND ABBREVIATIONS:

stitch: st

make: mk

skip: sk

chain: ch

slip st: sl st

single crochet: sc

sc bump on back

double crochet: dc

treble crochet: tr

2 dc cluster: 2 dc closed together in the same base st

picot: ch 3, 1 sl st into first ch

Increase: inc

decrease: dec

Pattern A - chart 1

Pattern B - chart 2

Pattern C - chart 3

Pattern D - chart 4

Crochet edge - chart 5

GAUGE: 17.75 S x 9.5 R = 10 cm / 4" over chart 2 - Pattern B using hook D-3.

PATTERN NOTES:

1. The dress is worked in the round from the waist to the bodice, with the front and back bodice worked separately to the shoulders.
2. The lower part of the dress is worked from the waist to the hem.
3. Dress is intended to fit with approximately 2-2.5" negative ease at the bust.
4. Pattern is charted only.

5. Transfer measurement chart to paper to guide you along. Arrows indicate direction.

INSTRUCTIONS

Body

Ch 140 (160, 180), join with a sl st being careful to not twist the ch.

Rnds 1-23: Work Chart 1, 14 (16, 18) motifs of 10 sts each.

Separate Front/Back Bodice

Back

Rows 24-33: Work Chart 2 over 60 (70, 80) sts, turn.

Row 34: Continue Chart 2 over 30 (35, 40) sts, join a second ball of yarn with a sl st in the next st and work the remaining 30 (35, 40) sts.

Rows 35-39: Continue Chart 2 working each side of upper back opening separately.

Fasten off after Row 39.

5. Transfer measurement chart to paper to guide you along.

Arrows indicate direction.

INSTRUCTIONS

Body

Ch 140 (160, 180), join with a sl st being careful to not twist the ch.

Rnds 1-23: Work Chart 1, 14 (16, 18) motifs of 10 sts each.

Separate Front/Back Bodice

Back

Rows 24-33: Work Chart 2 over 60 (70, 80) sts, turn.

Row 34: Continue Chart 2 over 30 (35, 40) sts, join a second ball of yarn with a sl st in the next st and work the remaining 30 (35, 40) sts.

Rows 35-39: Continue Chart 2 working each side of upper back opening separately.

Fasten off after Row 39.

Front

Row 24: Sk 10 sts, join a second ball of yarn with a sl st in next st, work Chart 2 over 60 (70, 80) sts, turn.

Rows 25-35: Continue Chart 2.

Shape Neckline/Front Shoulders

Row 36: Continue Chart 2 over 20 (25, 25) sts, sk next 20 (20, 30) sts, join a second ball of yarn with a sl st in next st and work remaining 20 (20, 25) sts.

Rows 36-39: Working each side separately, continue Chart 2 while at the same time, dec 1 st at neck edge 5 (6, 6) times. 15 (19, 19) sts each shoulder

Fasten off after Row 39.

With RS facing, seam shoulders.

Sew button on top left of back opening as shown on the schematic.

Neckline Finishing

Join yarn with a sl st in either shoulder seam.

Work Chart 5, evenly spacing sts around neckline and back opening, fasten off.

Sleeves (Make 2)

Sleeves are worked in the round from the armhole to end of sleeve.

With RS facing, join yarn with a sl st in center underarm.

Rnds 1-13: Work Chart 4, evenly spacing 60 (70, 80) sts around armhole.

Fasten off after Rnd 13.

Skirt

With RS facing, join yarn with a sl st in foundation chain joining sl st.

Rnd 1: Work Chart 3, increasing 16 (18, 20) sts evenly spaced, 52 (59, 67) motifs of 3 sts each. 156 (177, 201) sts

Rnds 2-11: Continue Chart 3.

Rnd 12: Work Chart 4, increasing 4 (13, 19) sts evenly spaced, 16 (19, 22) motifs of 10 sts each. 160 (190, 220) sts

Rnds 13-25: Continue Chart 4.

Rnd 26: Continue Chart 4, increasing 60 (70, 80) sts evenly spaced, 22 (26, 30) motifs. 220 (260, 300) sts

Rnds 27-39: Continue Chart 4.

Rnd 40: Continue Chart 4, increasing 120 (140, 160) sts evenly spaced, 34 (40, 46) motifs. 340 (400, 460) sts

Rnds 41-51: Continue Chart 4.

Rnd 52: Continue Chart 4 increasing 240 (140, 160) sts evenly spaced, 58 (68, 78) motifs. 580 (680, 780) sts

Rnds 53-64: Continue Chart 4.

Hemline Finishing

Work Chart 5 around hemline, fasten off.

Lining

Using dress as a template and lining fabric, sew a slip to wear underneath the dress.

Chart 2 - Pattern B

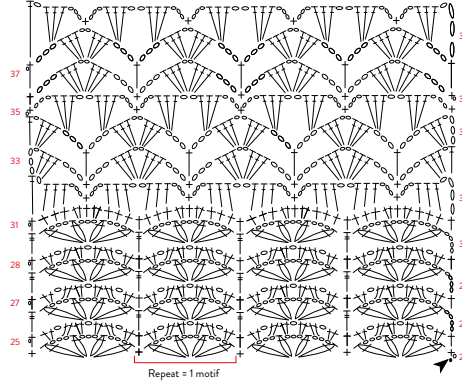


Chart 4 - Pattern D

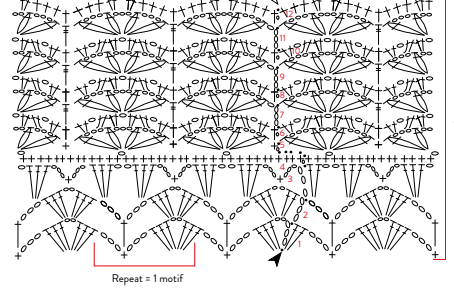


Chart 1 - Pattern A

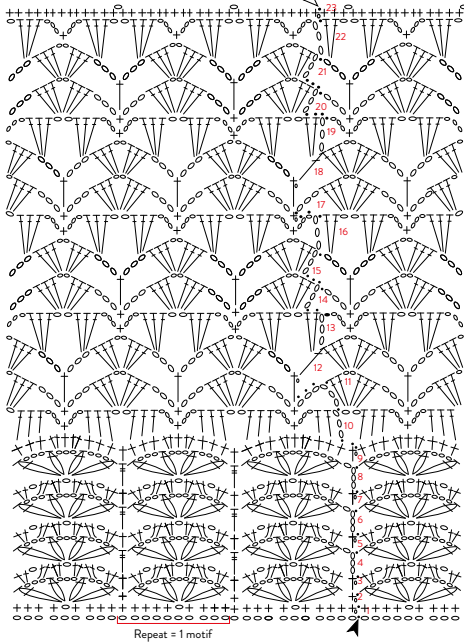


Chart 3 - Pattern C

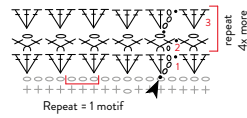
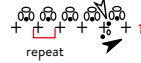


Chart 5 - Crochet edge



Stitch key

- ch
- sl st
- + sc
- ⊕ sc bump on back
- ⊥ dc
- ⊥ tr
- ⊕ 2 dc cluster
- ⊕ picot
- ↑↑ direction
- ▲ beginning
- △ end

