

2023

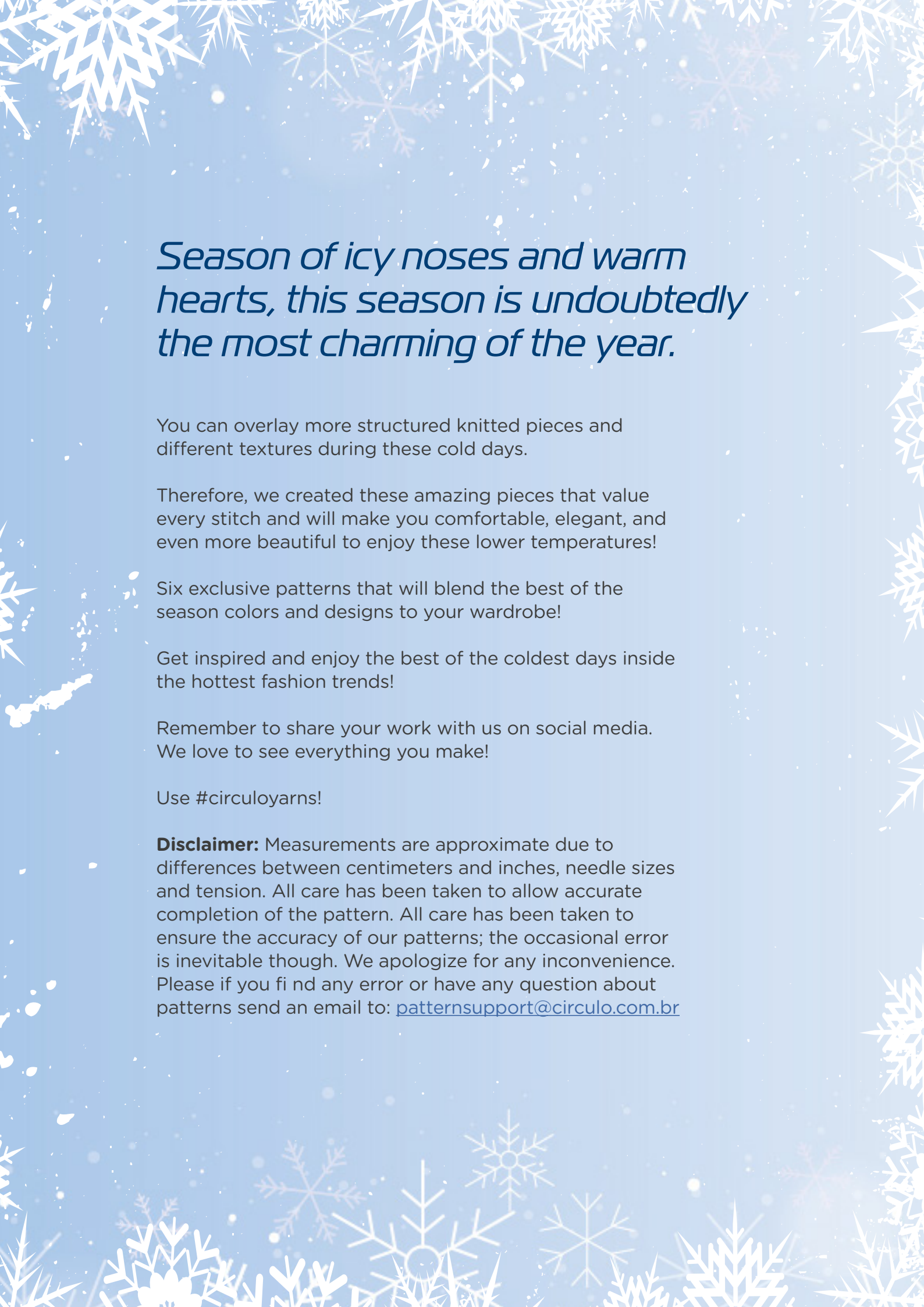
# Winter

E-book

**6 exclusive patterns**

The hottest fashion trends  
for the coldest days!

**CIRCULO**



*Season of icy noses and warm hearts, this season is undoubtedly the most charming of the year.*

You can overlay more structured knitted pieces and different textures during these cold days.

Therefore, we created these amazing pieces that value every stitch and will make you comfortable, elegant, and even more beautiful to enjoy these lower temperatures!

Six exclusive patterns that will blend the best of the season colors and designs to your wardrobe!

Get inspired and enjoy the best of the coldest days inside the hottest fashion trends!

Remember to share your work with us on social media. We love to see everything you make!

Use #circuloyarns!

**Disclaimer:** Measurements are approximate due to differences between centimeters and inches, needle sizes and tension. All care has been taken to allow accurate completion of the pattern. All care has been taken to ensure the accuracy of our patterns; the occasional error is inevitable though. We apologize for any inconvenience. Please if you find any error or have any question about patterns send an email to: [patternsupport@circulo.com.br](mailto:patternsupport@circulo.com.br)

**Puff  
sleeve  
*pullover***



# Puff sleeve pullover

**Created by Samara Varella**

**Size:** 6

**Level:** Intermediate

## Material

Bamboo- 5 skeins color #2581

Circular needles 8/5 mm 29" long

Tapestry needle

Scissors & measuring tape

**Gauge:** 20 S x 22 R = 4"/10 cm over Chart 1 - Pattern using needles 8/5 mm.

## Stitch glossary and abbreviations:

st: stitches

CO: cast on

BO: bind off

rep: repeat

mk: make

dec: decreases

inc: increases

RS: right side

WS: wrong side

K: knit

P: purl

Pattern - follow chart 1

Stockinette st - follow chart 2

1x1 Rib st - follow chart 3

## Back

CO 93 sts onto needles 8. Start at waistline. Follow chart 1 and rep sts up to 15.75" and start armhole shaping: dec on each side every 2 rows: 5 sts (1x), 2 sts (9x) and 4 sts (1x) = 39 sts. At 27.5" from the beginning BO all sts.

## Front

CO 93 sts onto needles 8. Start at waistline. Follow chart 1 and rep sts up to 15.75" and start armhole shaping: dec on each side every 2 rows: 5 sts (1x), 2 sts (9x) and 4 sts (1x) = 39 sts. At 25" from the beginning start

neckline shaping: BO the 15 central sts and work sides separately (12 sts each). Dec on the neckline side every 2 rows: 3 sts (1x), 2 sts (1x) and 1 st (1x). At 27.5" from the beginning BO all sts.

## Sleeve upper part (mk 2)

CO 80 sts onto needles 8. Work in St st - chart 2 and rep sts. At 12" from the beginning BO all sts.

## Sleeve lower part (mk 2)

CO 42 sts onto needles 8. Follow chart 1 - Pattern and rep sts. While making the last row of Pattern, inc 15 sts evenly spaced = 57 sts. At 14.25" from the beginning BO all sts.

## Shoulder assembly

Use tapestry needle and Bamboo to close left shoulder (2.5"), leave right shoulder open to make collar.

## Collar

Use circular needles 8 to pick up 82 sts around neckline. Work in 1x1 Rib st - chart 3 and rep sts up to 1.25". Fasten off with a tail for sewing (approx. 10"). Insert this tail into tapestry needle, close collar (1.25") and right shoulder (2.5")

## How to assemble sleeves onto body

Use tapestry needle and Bamboo. Sew upper part of sleeve onto top of body (12") 6" onto front and 6" onto back- see chart - green part. The blue part on chart (21") shows how to sew upper part of sleeve onto body (6"). Mk 4 pleats, 1.25" each. Now join upper part and lower part as shown in yellow on the chart.

## Assembly and finishing

Use tapestry needle and Bamboo to close sides (15.75") and sleeves (14.25")

# Puff sleeve pullover

Chart 1 - Pattern

Note: odd rows (RS)  
even rows (WS)

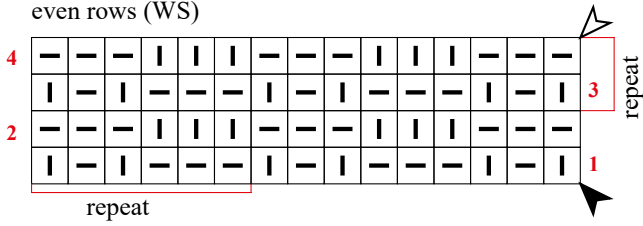


Chart 2 - Stockinette st

Note: odd rows (RS)  
even rows (WS)

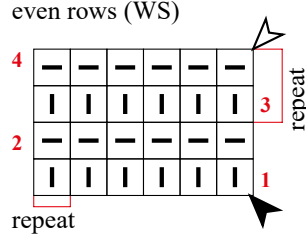
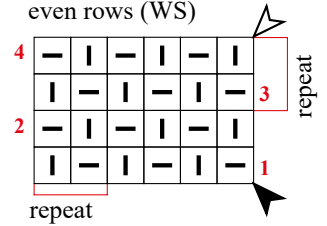
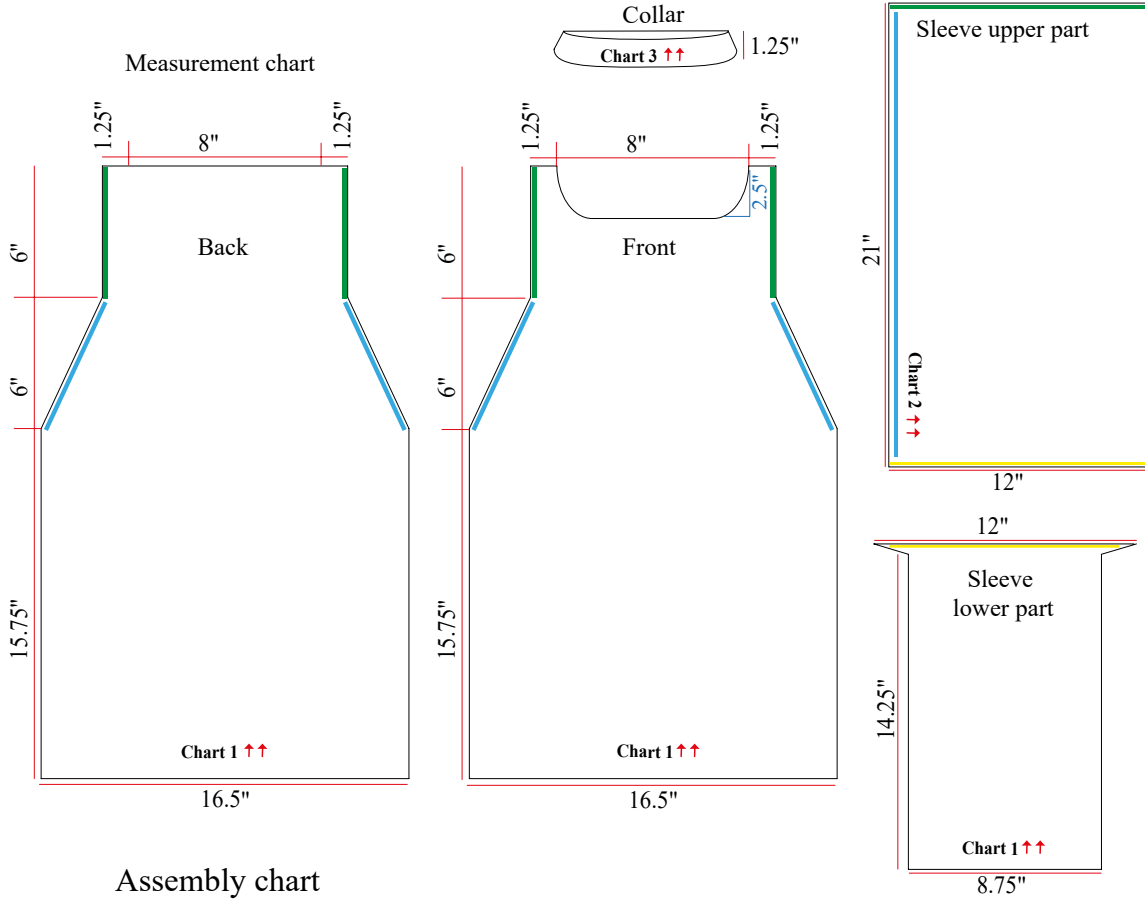


Chart 3 - 1x1 Rib st

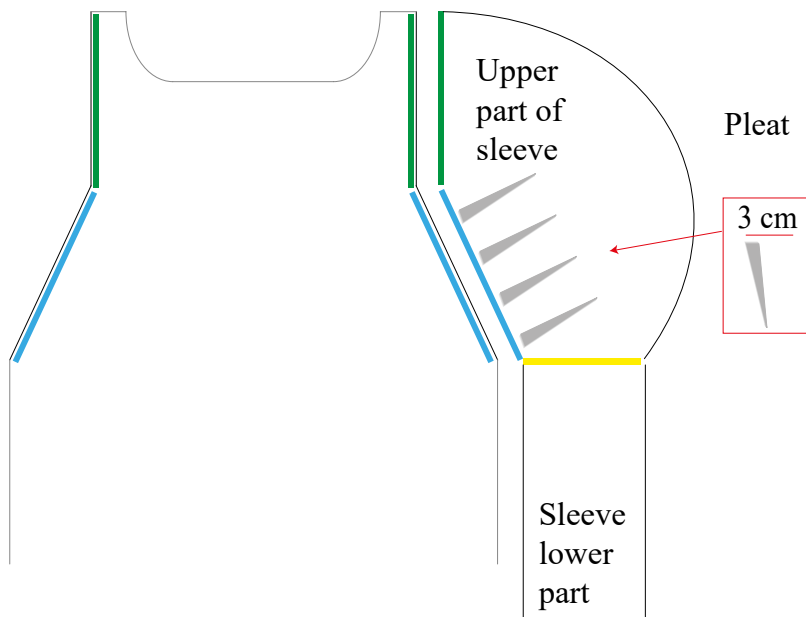
Note: odd rows (RS)  
even rows (WS)



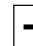




Measurement chart



Assembly chart



Stitch key

-  p
-  k
-  beginning
-  end
-  direction

**Sweet**  
*dream top*



# Sweet dream *top*

**Created by Patricia Hagemann**

**Size:** 6

**Level:** Intermediate

## Material

Verbena - 5 skeins color #9983

Circular needles 9/5.5 mm 29" long

Circular needles 11/8 mm 29" long and 31" long

2 cable needles

Tapestry needle

Stitch markers

Scissors & measuring tape

**Gauge:** 12 S x 18 R = 4"/10 cm over chart 2 - Pattern B using needles 11.

## Stitch glossary and abbreviations:

st: stitches

CO: cast on

BO: bind off

CN: cable needle

rep: repeat

mk: make

dec: decreases

inc: increases

RS: right side

WS: wrong side

K: knit

P: purl

2x2 Rib st in the round - follow chart 1

Pattern A in the round - follow chart 2

Pattern B - follow chart 3

2x2 Rib st - follow chart 4

skp: slip 1, k1, pass sl st over

Sl 1 purlwise wyf on RS

## Front and back are worked simultaneously in the round.

CO 93 sts onto needles 11 (31"). Mk 1 skp = 92 sts onto needles. Insert st marker to keep track of rnds. Work in 2x2 Rib st - chart 1 and rep sts up to 2.5". Follow Pattern A - chart 2 and rep sts up to 13.5". End in an even rnd of Pattern A. Work front and back separately. Knit back and forth. Start at WS in Pattern

B - chart 3 and rep sts for 4.5" more. Leave the 46 sts of back onto needle and slip the 46 sts of front onto cable needle.

## Back continuation

Keep the central 30 sts onto CN to work collar later. Work sides separately (8 sts on each side). Work in Pattern B - chart 3 up to 1.5" and BO all sts.

## Front continuation

Return the 46 sts onto needles 11. Keep the central 30 sts onto CN to work collar later. Work sides separately (8 sts on each side). Work in Pattern B - chart 3 up to 1.5" and BO all sts.

## Collar

Return the 30 sts of front and back = 60 sts to circular needles 9. Work in 2x2 Rib st in the round - chart 1 and rep sts up to 4", BO all sts. Use tapestry needle to close shoulders (3.25")

## Sleeves (mk 2)

Knit in the round.

Use needles 11 (29" long) to pick up 49 sts around armhole. MK 1 skp= 48 sts onto needles. Insert st marker to keep track of rnds. Knit the first 3 rnds with increases, work as follows:

R1: k6, \*kfb, k1\* rep from \* to \* 2 more times, kfb = 52 sts.

R2: k10, \*kfb, k1\* rep from \* to \* 1 more time, kfb = 55 sts.

R3: k10, \*kfb, k1\* rep from \* to \* 3 more times, kfb = 60 sts.

R4: Follow Pattern A - chart 1 and rep sts up to 9". End Pattern A in an odd rnd.

Knit back and forth. Turn piece to WS and work as follows: \*p2tog\* 30x = 30 sts onto needles.

Cuff: work in 2x2 Rib st - chart 4 and rep sts for 2.75". BO all sts. Switch to tapestry needle, close cuff (2.75") and mk a pleat (1.5") on top.

# Sweet dream top

Chart 1 - 2x2 Rib st

Note.: Knit in the round

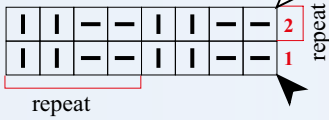


Chart 2 - Pattern A

Note.: Knit in the round

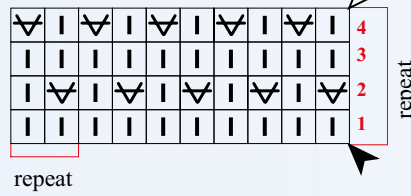


Chart 3 - Pattern B

Note.: odd rows (RS)  
even rows (WS)

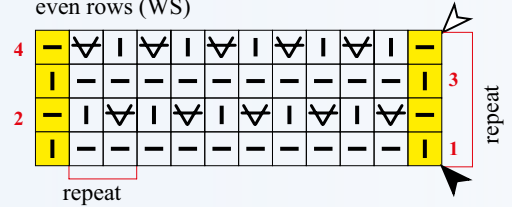
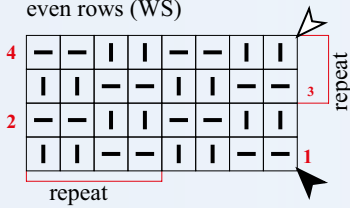


Chart 4 - 2x2 Rib st

Note.: odd rows (RS)  
even rows (WS)

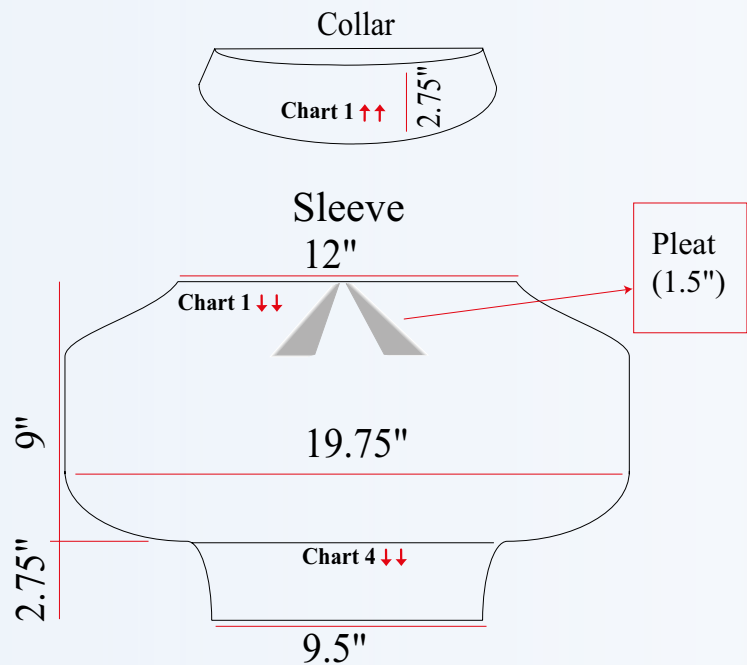
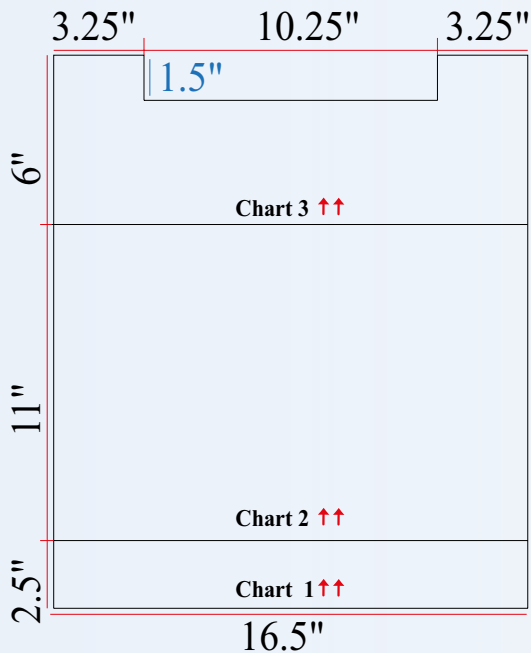


## Stitch key

- k
- p
- Sl 1 purlwise wyf on RS
- edge sts
- beginning
- end
- direction

## Measurement chart

Back = front





**Cozy**  
*pullover*



# Cozy pullover

**Created by Isamar Eberdobler**

**Size:** 6

**Level:** Intermediate

## Material

Luar- 6 skeins color #3453  
Circular needles 10.5 - 29" long  
Tapestry needle  
Scissors & measuring tape

**Gauge:** 15 S x 19 R = 4"/10 cm over Chart 1 - Pattern A using needles 10.5.

## Stitch glossary and abbreviations:

st: stitches

CO: cast on

BO: bind off

rep: repeat

mk: make

dec: decreases

inc: increases

RS: right side

WS: wrong side

K: knit

P: purl

skp: slip 1, k1, pass sl st over

Pattern A - follow chart 1

2x2 Rib st - follow chart 2

Pattern B - follow chart 3

## Back

CO 70 sts onto circular needles 10.5. Follow Pattern A - chart 1 and rep sts up to 21.75". BO all sts.

## Front

CO 70 sts onto circular needles 10.5. Follow Pattern A - chart 1 and rep sts up to 19.25". start neckline shaping: BO the 10 central sts and work sides separately (30 sts on each side). Dec on the neckline side every 2 rows: 2 sts (1x) and 1 st (6x). At 21.75" from the beginning BO the remaining 22 sts.

## Sleeves (mk 2)

CO 22 sts onto needles 10.5. Work in 2x2 Rib sts - chart 2 and rep sts up to 2.5". Follow Pattern B - chart 3 and rep sts. Inc 50 sts evenly spaced in row 1 and 50 sts in row 2 of Pattern B = 122 sts. At 16.25" from the beginning BO all sts.

## Assembly and finishing

Use tapestry needle and Luar to close left shoulder (5.25"), leave right shoulder open to make collar.

## Collar

Use needles 10.5 to pick up 84 sts around neckline. Work in 2x2 Rib st - chart 2 and rep sts up to 1.5". BO all sts, leave a tail for sewing (approx. 10"). Close collar (1.5") and right shoulder (5.25")

# Cozy pullover

Chart 1 - Pattern A

Note.: odd rows (RS)  
even rows (WS)

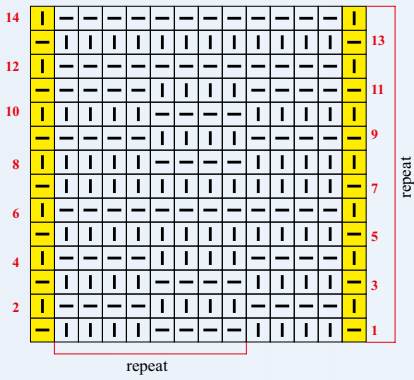
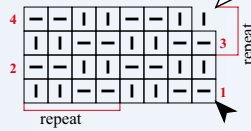


Chart 2 - 2x2 Rib st

Note.: odd rows (RS)  
even rows (WS)

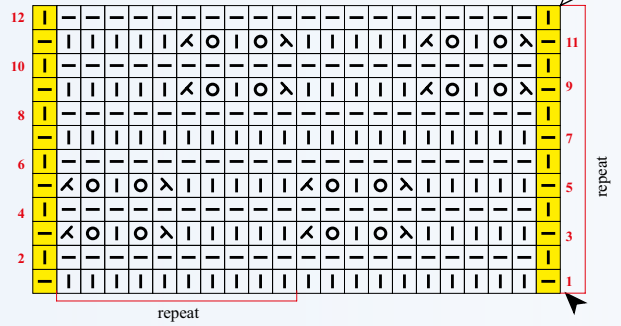


Stitch key

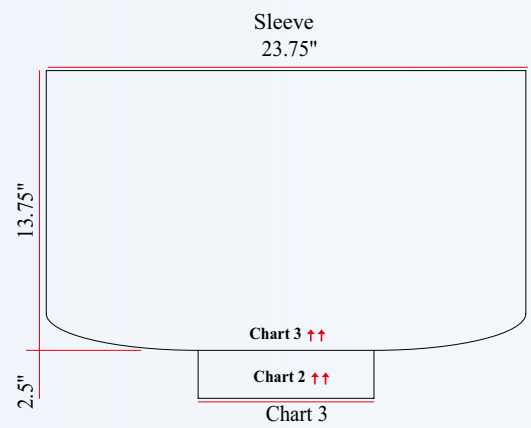
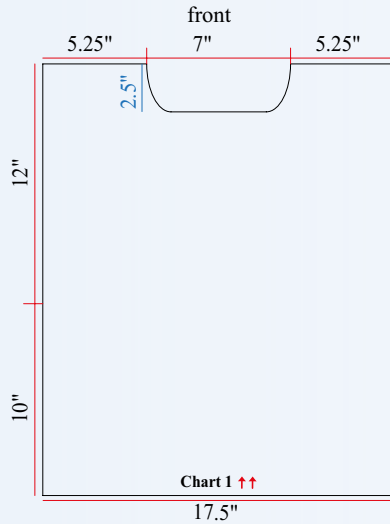
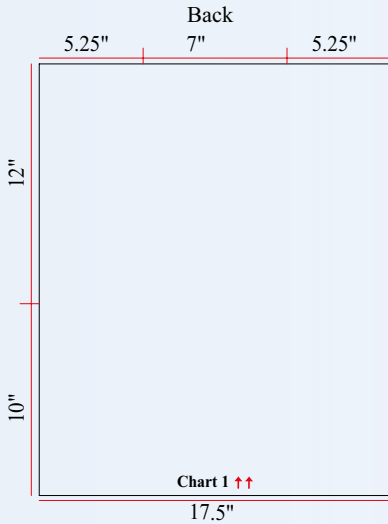
- p
- k
- k2tog
- skp
- yo
- edge sts
- beginning
- end
- direction

Chart 3 - Pattern B

Note.: odd rows (RS)  
even rows (WS)



Measurement chart



**Sky blue**  
*pullover*



# Sky blue pullover

**Created by Circulo studio**

**Size:** 18

**Level:** Intermediate

## Material

Hobby - 5 skeins color #560

Knitting needles 10 and 10.5

Circular needles 10 29" long

**Gauge:** 14 S x 21 R = 4"/10 cm over St st using needles 10.5.

## Stitch glossary and abbreviations:

st: stitches

CO: cast on

BO: bind off

rep: repeat

mk: make

dec: decreases

inc: increases

RS: right side

WS: wrong side

K: knit

P: purl

Garner Stitch: Knit or purl every row. Every 2 rows = 1 ridge.

Stockinette Stitch: Knit RS rows and Purl WS rows.

Bobble st: (k1, p1, k1, p1, k1) in the same st, turn, p5, turn, k5tog.

Pattern - follow chart.

## Back

CO 90 sts onto needles 10 and work in 2x2 Rib st up to 3.25". Switch to needles 10.5

and work in St st up to 15". At 18" from the beginning start armhole shaping: BO on each side every 2 rows: 3 sts and 1 st (7x). At 25.25" from the beginning BO all sts.

## Front

CO 90 sts onto needles 10 and work in 2x2 Rib st up to 3.25". Switch to needles 10.5. Inc 1 st and work as follows: 30 sts = St st, 31 sts = Pattern and 30 sts = St st.. At 18" start armhole shaping: BO on each side every 2 rows: 3 sts and 1 st (7x). At 23" from the beginning start neckline shaping: BO the 15 central sts and work sides separately. BO 4 sts, 3 sts, 2 sts and 1 st on the neckline side every 2 rows. At 25.25" from the beginning BO all sts.

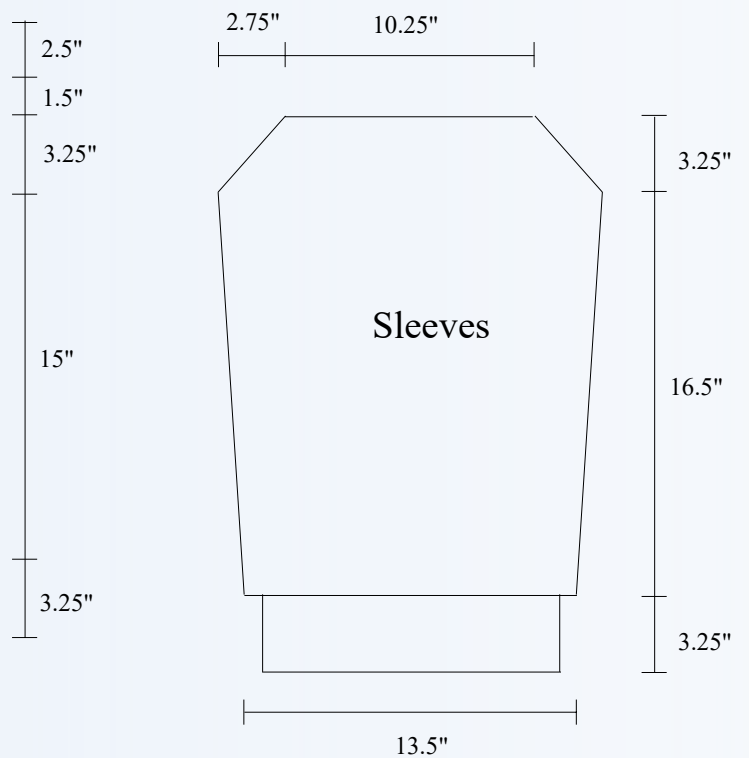
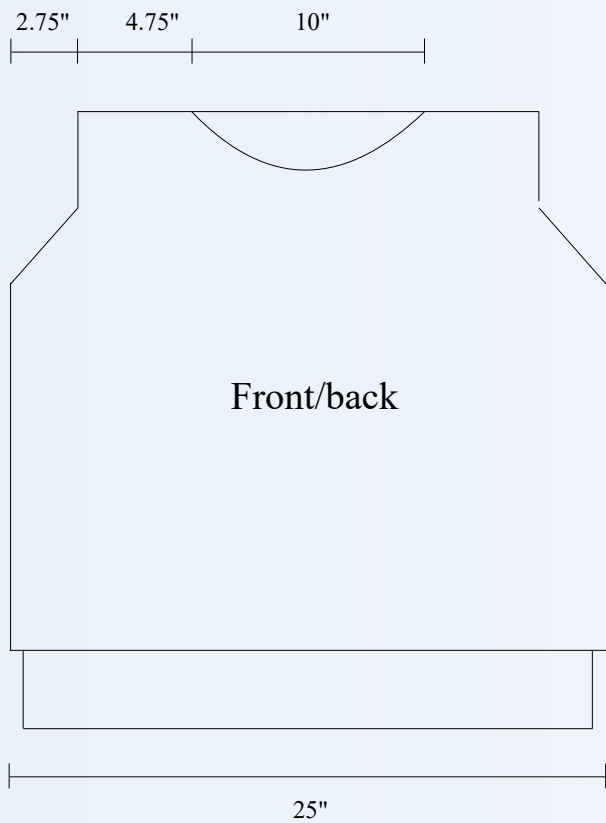
## Sleeves (mk 2)

CO 46 sts onto needles 10 and work in 2x2 Rib st up to 3.25". switch to needles 10.5 and work in St st. Inc 1 st on each side every 14 rows (5x). At 19.75" from the beginning start armhole shaping: BO every 2 rows: 2 sts and 1 st (7x). At 23" from the beginning BO all sts.

## Assembly and finishing

Sew shoulders. Use circular needles to pick up 92 sts on the RS of neckline. Work in 2x2 Rib st up to 2". BO. Close sleeves and sew them onto body.

# Sky blue *pullover*

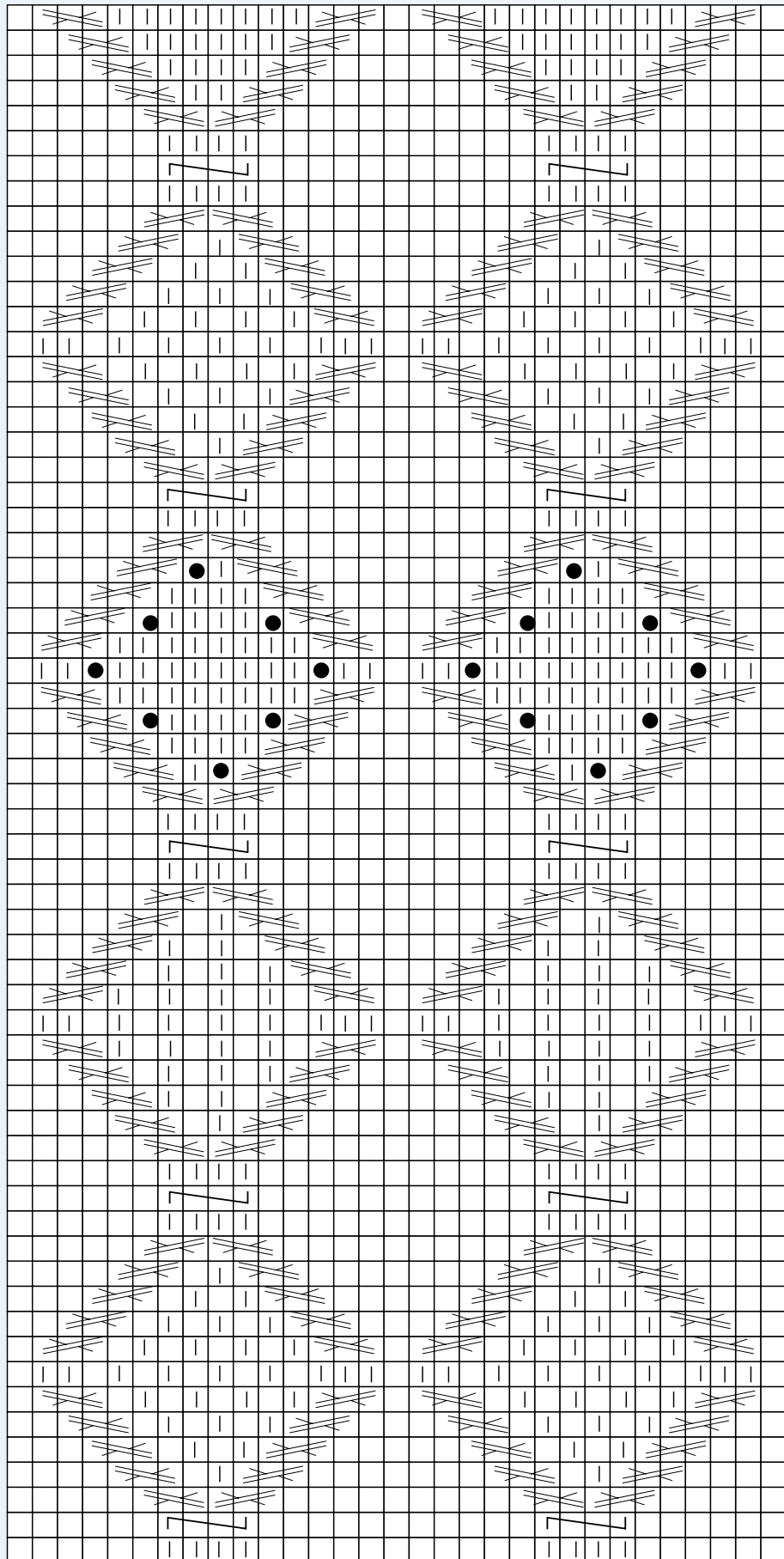


## Stitch key

- | = k
- = p
- ∟ = 2/2 LC - sl 2 sts onto cn, hold in front, k2, k2 from cn
- ⌘ = 2/1 RC - sl 1 st onto cn, hold in back, k2, p1 from cn
- ⌘ = 2/1 LC - sl 2 sts onto cn, hold in front, p1, k2 from cn
- = Bobble st - see glossary
- WS = knit the knit sts and purl the purl sts.

# Sky blue pullover

## Pattern



Central stitch

7  
5  
3  
1

**Tulip**  
**Cropped**  
*top*





# Tulip Cropped *top*

**Created by Ines Cruz**

**Size:** 6

**Level:** Intermediate

## Material

Ame - 6 skeins color #6044

Knitting needles 8/5 mm

Tapestry needle

Scissors & measuring tape

**Gauge:** 20 S x 25 R = 4"/10 cm over Chart 1 - Pattern using needles 8.

## Stitch glossary and abbreviations:

st: stitches

CO: cast on

BO: bind off

rep: repeat

mk: make

dec: decreases

inc: increases

RS: right side

WS: wrong side

K: knit

P: purl

skp: slip 1, k1, pass sl st over

Pattern A - follow chart 1

Stockinette st - follow chart 2

## Front = Back (mk 2 identical panels)

CO 80 sts onto needles 8. Follow Pattern chart 1 and rep sts (1 edge st + 13 motif + 1 edge st). At 9" from the beginning start armhole shaping, dec on each side every

2 rows: 3 sts (1x), 2 sts (1x) and 1 st (1x) = 68 sts. At 13.75" from the beginning start neckline shaping: BO the central 14 sts and work sides separately (27 sts on each side). Dec on the neckline side every 2 rows: 3 sts (1x), 2 sts (1x) and 1 st (3x). At 15" from the beginning BO the remaining 21 sts.

## Sleeves (mk 2)

CO 38 sts onto needles 8.

Follow Pattern - chart 1 and rep sts (1 edge st + 6 motifs + 1 edge st). At 5.25" from the beginning inc 1 st on each side every 8 rows (6x) = 50 sts. At 19" start armhole shaping: dec on each side every 2 rows: 2 sts (2x) and 1 st (9x). At 21.25" from the beginning BO the remaining 24 sts.

## Assembly and finishing

Use tapestry needle and Ame to close shoulders (4.5"), leave right shoulder open to make collar.

## Collar

Use needles 8 to pick up 68 sts around neckline. Work in St st - chart 2 and rep sts up to 2". BO all sts, leave a tail for sewing (approx. 12"). Insert this tail into tapestry needle and close collar (2") and right shoulder (4.5"). Close sides (9"), leave 6" open for arms. Close sleeves (19") and sew them onto body lower part. Note: see blue line on the measurement chart on how to sew sleeves onto body.

# Tulip Cropped top

Chart 1 - Pattern

Note.: odd rows (RS)  
even rows (WS)

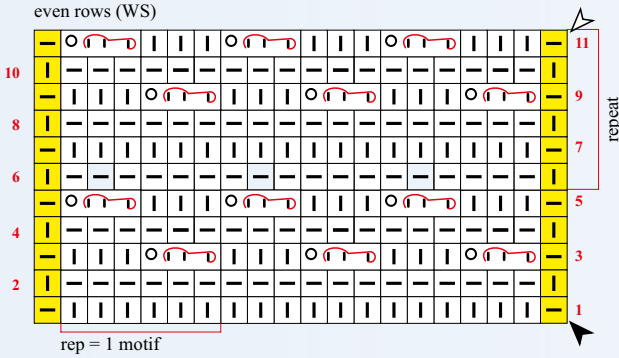
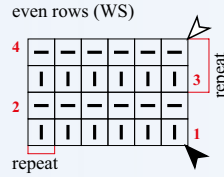


Chart 2 - Stockinette st

Note.: odd rows (RS)  
even rows (WS)



Stitch key

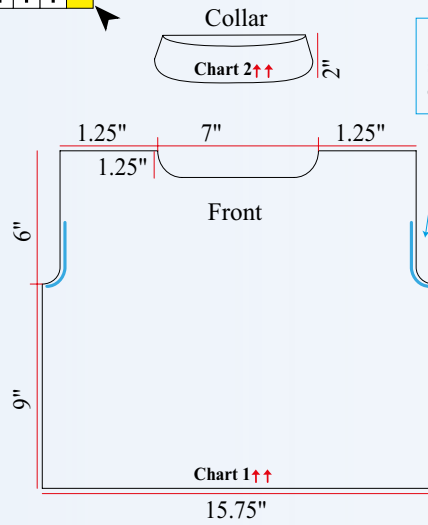
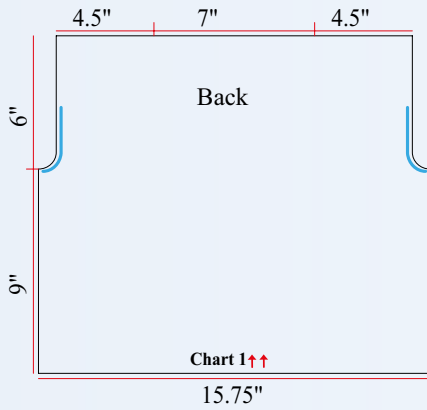
□ p □ k

○ p ○ k

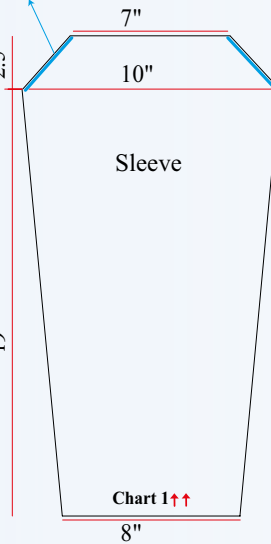
Slip 3 sts to right needle, pass the 1st st over the 2nd and 3rd sts. Return the 2nd and 3rd st to left needle and work (k1, yo, k1)

▲ beginning ▲ endd ↑↑ irection

Measurement chart



Sew sleeves onto body



**Maxi**  
**turtleneck**  
*pullover*



# Maxi turtleneck *pullover*

**Created by** Luciana Panza

**Size:** 6

**Level:** Intermediate

## Material

Imperial- 5 skeins color #3290

Circular needles 10 and 10.5 - 31" long

2 cable needles

Tapestry needle

Stitch markers

Scissors & measuring tape

**Gauge:** 15 S x 21 R = 4"/10 cm over St st (chart 1) using needles 10.5.

## Stitch glossary and abbreviations:

st: stitches

CO: cast on

BO: bind off

CN: cable needle

rep: repeat

mk: make

dec: decreases

inc: increases

RS: right side

WS: wrong side

K: knit

P: purl

2x2 Rib st in the round - follow chart 1

Stockinette st in the round- follow chart 2

Stockinette st - follow chart 3

2x2 Rib st - follow chart 4

skp: slip 1, k1, pass sl st over

## This piece is worked top-down.

CO 97 sts onto needles 10. Mk 1 skp = 96 sts.

Insert st marker to keep track of rnds. Work

in 2x2 Rib st - chart 1 and rep sts up to 8".

While working the last rnd of Rib inc 4 sts evenly spaced = 100 sts. Switch to needles 10.5. Divide body and sleeves for Raglan increases. Start at back center and work in St st - chart 2 and rep sts.

## Raglan division:

Insert stitch marker, 17 sts (right back), stitch marker, 15 sts (right sleeve), stitch marker, 35 sts (front), stitch marker, 15 sts (left sleeve), stitch marker, 18 sts (left back). Inc 1 st (18x) before and after stitch markers every 2 rnds. Work up to 7". Total of stitches to end raglan: 71 sts (front and back) and 51 sts (each sleeve). Slip the 51 sts of each sleeve to CN.

## Body continuation = 142 sts

Work in St st (chart 2) up to 8.75". Dec 6 sts evenly spaced in the last rnd of body = 136 sts. Switch to needles 10 and work in 2x2 Rib st (chart 1) for 4". BO all sts.

## Left sleeve = Right sleeve

Work back and forth.

Return the 51 sts to needles 10.5. Inc 1 st = 52 sts. Work in St st - chart 3 and rep sts. Dec 1 st (9x) every 6 rows = 34 sts. At 17" from the beginning of this section, switch to circular needles 10 and work in 2x2 Rib st - chart 4 and rep sts up to 3.25". BO all sts, leave a tail for sewing (approx. 25.5"). Insert this tail into tapestry needle and close sleeve (20")

# Maxi turtleneck *pullover*

Chart 1 - 2x2 Rib st

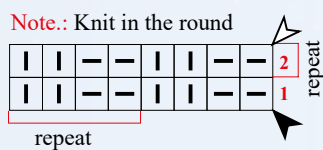


Chart 2 - Stockinette st

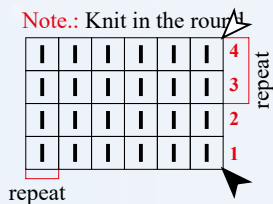


Chart 3 - Stockinette st

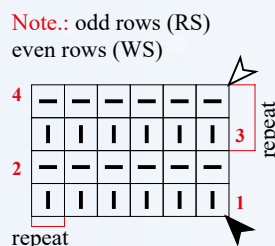
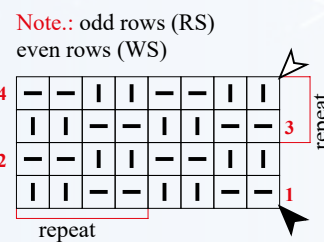
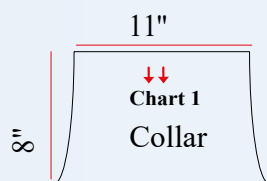


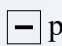




Chart 4 - 2x2 Rib st



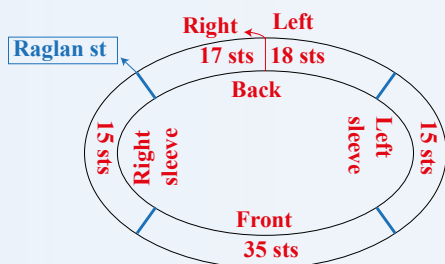
Measurement chart  
Back = Front



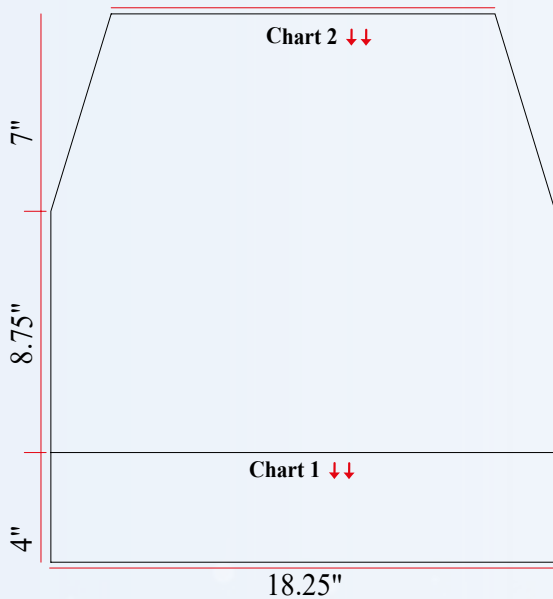
Stitch key

-  p
-  k
-  beginning
-  end
-  direction

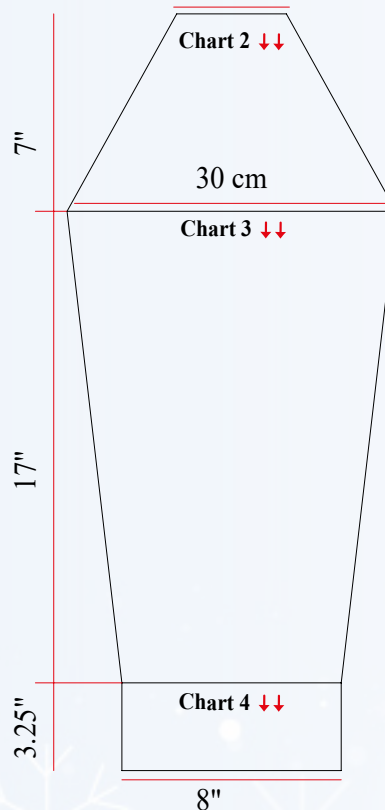
Raglan division



Front = back  
8.75"



Sleeve  
4"





2023  
**Winter**  
E-book

**CIRCULO**

© Instagram Facebook /circulo.usa

#circuloyarns

[www.circuloyarns.com](http://www.circuloyarns.com)